



# PIMCO Real Return Fund



Quarterly Investment Report | 4Q23

## **IMPORTANT NOTICE**

Please note that this material contains the opinions of the manager as of the date noted, and may not have been updated to reflect real time market developments. All opinions are subject to change without notice.

# Executive summary

## Portfolio Performance

Over the quarter, the Real Return Fund (institutional share class, after fees) posted positive absolute returns of 4.56%, but modestly underperformed its benchmark. Contributions from the Fund's overweight exposure to U.S. interest rates, security selection within Eurozone interest rates, and an exposure to U.S. agency mortgages were offset by detractors from the Fund's overweight exposure to U.S. breakeven inflation and active currency strategies.

### CONTRIBUTORS

Overweight exposure to U.S. interest rates  
Security selection within Eurozone interest rates  
Exposure to U.S. agency MBS

### DETRACTORS

Overweight exposure to U.S. breakeven inflation  
Active currency strategies

Performance periods ended 31 Dec '23	3 mos.	6 mos.	1 yr.	3 yrs.	5 yrs.	10 yrs.	SI
Fund before fees	4.68	2.37	4.21	-0.70	3.75	2.84	5.59
Fund after fees	4.56	2.14	3.74	-1.14	3.28	2.38	5.11
Benchmark*	4.71	1.99	3.90	-1.00	3.15	2.42	4.69

Performance quoted represents past performance. Past performance is not a guarantee or a reliable indicator of future results. Investment return and the principal value of an investment will fluctuate. Shares may be worth more or less than original cost when redeemed. Current performance may be lower or higher than performance shown. For performance current to the most recent month end, visit [pimco.com](http://pimco.com) or call 888.87.PIMCO.

## Portfolio strategy

**Interest rates:** The Fund expresses a flat to modestly overweight duration position overall, sourced via U.S. interest rates. Our current duration positioning is based on the sentiment that most central banks have reached the peak in their current rate hiking cycles, with rate cuts expected to commence in mid-to-late 2024, if not earlier.

**Reflation:** We maintain an overweight to breakeven inflation in the U.S., as long-term inflation expectations are still well anchored despite inflation continuing to run above the Fed's target and core CPI remaining stubbornly high.

**Relative value:** Selective in curve positioning across rates and breakeven inflation. Within U.S. TIPS, we favor par 5s and par 10s relative to an underweight to par 30s.

**Spread sectors:** Maintain exposure to select high-conviction spread sectors, including U.S. agency and non-agency MBS.

<b>Class:</b>	<b>INST</b>
<b>Inception date:</b>	<b>29 Jan '97</b>
<b>Fund assets (in millions):</b>	<b>\$8,329.76</b>
<b>Gross expense ratio:</b>	<b>0.67%</b>
<b>Adjusted expense ratio:</b>	<b>0.45%</b>

The Adjusted Expense Ratio excludes certain investment expenses, such as interest expense from borrowings and repurchase agreements and dividend expense from investments on short sales, incurred directly by the Fund or indirectly through the Fund's investments in underlying PIMCO Funds (if applicable), none of which are paid to PIMCO.

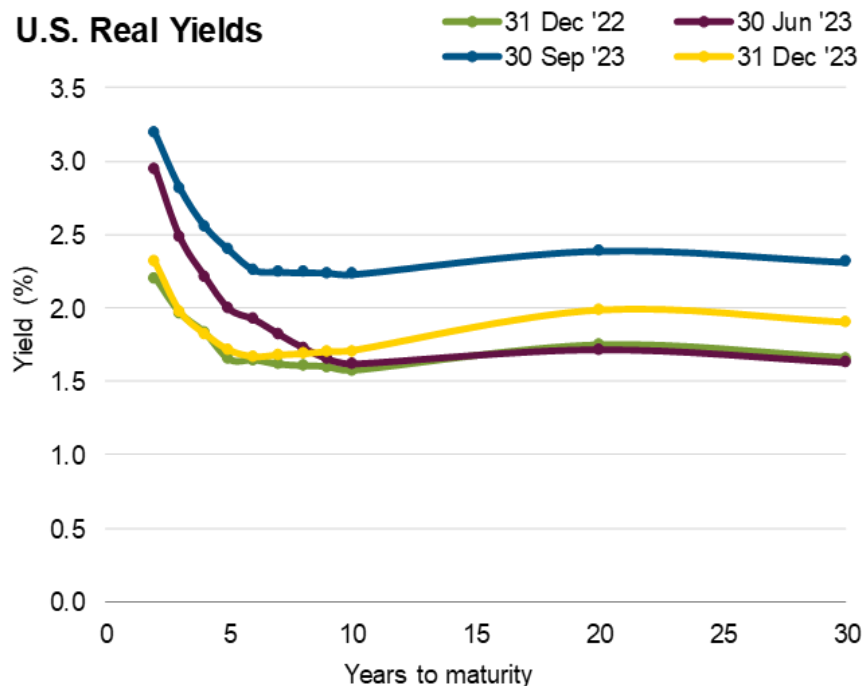
Summary information	31 Dec '23
30-day SEC yield	1.99%
Distribution yield	0.95%
Effective duration (yrs)	6.64
Inflation-linked bond duration (yrs)	7.39
Non Inflation-linked bond duration (yrs)	-0.75
Benchmark duration - provider (yrs)	6.67
Benchmark duration - PIMCO (yrs)	6.58
Effective maturity (yrs)	6.02
Average coupon	1.65%
Yield Beta	1.00
Net currency exposure	-0.89%
Tracking error (10 yrs)	0.96
Information ratio (10 yrs)	-0.03

\*Bloomberg U.S. TIPS Index; †The SEC yield is an annualized yield based on the most recent 30 day period. The fund's yield quotation includes an adjustment to the principal value of the TIPS securities to reflect changes in the government's official inflation rate, if any; changes in the government's official inflation rate can cause the fund's yield to vary substantially from one month to the next. At times, including during periods of deflation, the SEC yield calculation may result in a negative number. If the current 30-day SEC yield is denoted with a "†", we believe it is attributable to a rise in the inflation rate, and might not be repeated. Due to the consolidation of operations and permanence of the fund's fee waivers, such waivers do not materially affect the fund's SEC yield. The SEC yield will differ (at times, significantly) from the fund's actual experience and any inflation adjustment to principal is treated as income; as a result, income distributions from the fund may be higher or lower than implied by the SEC yield.

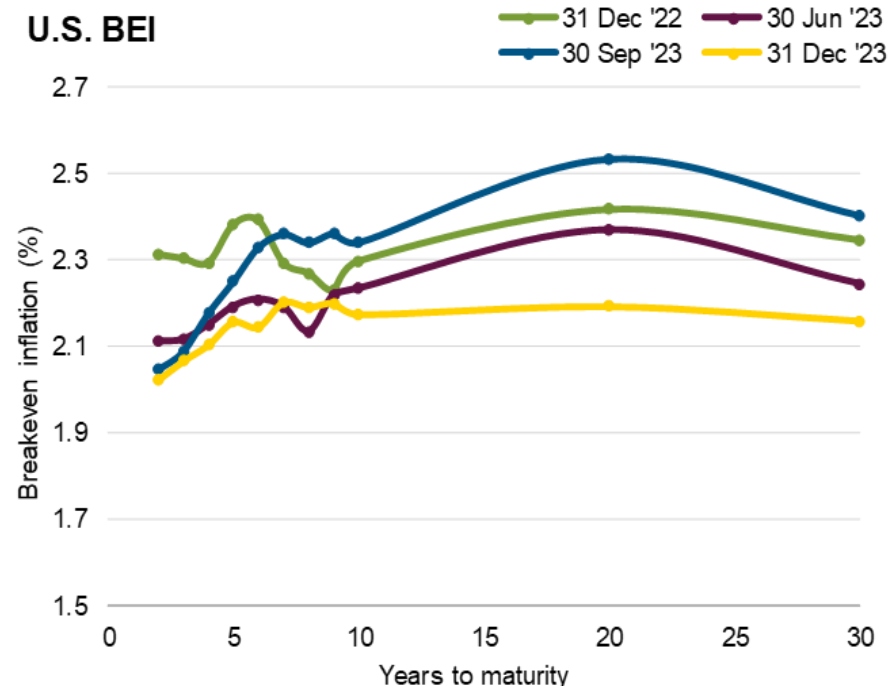
# Quarter in Review

## Real yields rallied across maturities in Q4, while inflation expectations fell across the curve

U.S. TIPS returned 4.71%, as represented by the Bloomberg U.S. TIPS Index, but modestly underperformed comparable nominal Treasuries. Real rates rallied across maturities in Q4 given a dovish pivot from the Fed and expectations that their rate hiking cycle is complete. U.S. inflation expectations fell across the curve in Q4 amid weakening commodity prices, and underlying inflation data showing signs of easing.



U.S. real yields rallied across the curve in Q4. The Fed kept interest rates unchanged in November and December, suggesting that the current cycle of rate hikes might be over, with multiple rate cuts now expected in 2024, though timing remains uncertain. TIPS posted positive returns, but modestly underperformed comparable nominal Treasuries in Q4.



U.S. breakevens experienced a broad decline across maturities in Q4 amid diminishing commodity prices and indications that core inflation is beginning to soften. Despite resilient GDP and employment reports, headline CPI moderated over the quarter on easing rents, fading energy base effects and outright goods deflation. However, Core CPI remained sticky, around 4% (y/y) supported by core and medical services inflation, while the Fed remains ready to act despite a seemingly dovish rhetoric at the December FOMC meeting.

SOURCE: Bloomberg

# Market Summary

## Q4 '23: TIPS posted positive returns as real rates rallied

The Fund's overweight exposure to U.S. interest rates, security selection within Eurozone interest rates, and an exposure to U.S. agency mortgages were additive to performance. An overweight to U.S. breakeven inflation and active currency strategies detracted.

### U.S. real interest rates

U.S. real yields declined across maturities over the quarter. The Fed kept interest rates unchanged in November and December, suggesting that the current cycle of rate hikes might be over, with multiple rate cuts now expected in 2024. Though, timing of rate cuts remains uncertain.

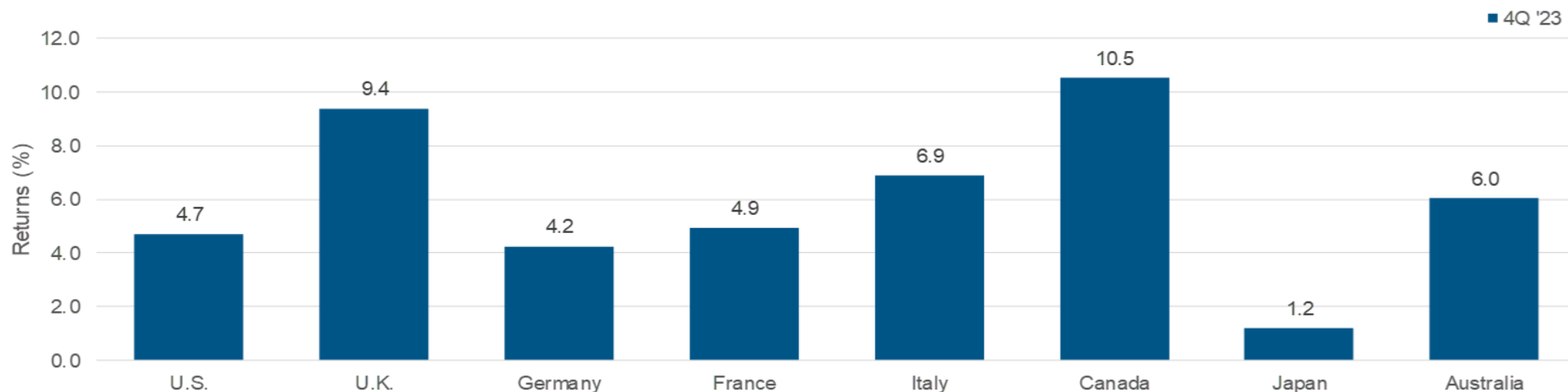
### U.S. breakeven inflation expectations

In October, U.S. inflation expectations broadly rose across the curve on the backs of core CPI surprising to the upside, driven by volatile travel services and shelter categories. However, U.S. breakevens showed a broad decrease across maturities in both November and December, after the Fed held rates steady in both months amid easing economic data and sentiments that monetary policy was sufficiently restrictive. Seemingly dovish rhetoric from the Fed at the December meeting led to widespread beliefs that the current cycle of rate hikes has likely reached its end.

### Global inflation-linked bonds (ILBs)

ILB markets delivered positive returns as real yields declined across countries and inflation expectations weakened. Eurozone breakevens declined across the curve given lower than expected headline and core inflation prints as well as weakening growth. Despite the ECB maintaining a hawkish posture after pausing in Q4, markets turn their expectations to cuts in 2024. Despite still remaining above U.S. and Eurozone headline inflation, cooling U.K. prices led to U.K. breakevens declining across the curve. The BoE kept its policy rate unchanged amid falling GDP and an easing labor market with payroll employment and vacancies falling.

Returns of key global ILB markets (In USD, unhedged)



SOURCE: Bloomberg Inflation-Linked Bond Country Indices.

## Navigating the Descent: Four economic themes

---



**Peak inflation and rising unemployment consistent with rate cuts**



**Soft landings are possible, but risks remain**



**Markets already price a substantial cutting cycle**



**Global divergence in monetary policy**

# Portfolio Outlook

---

## Strategic outlook

Further disinflation and the potential for a faster cutting cycle should, in our view, raise the prospects for a soft landing. However, this is not to say that we believe that the path toward a soft landing is the only possible path. It is our view that the tighter-for-longer strategy that central banks have been communicating along with the strong possibility of stagnation in developed market supply and demand growth leave recession risks elevated.

### Key strategies

#### Interest rates

The Fund expresses a flat to modestly overweight duration position overall, sourced via U.S. interest rates. Our current duration positioning is based on the sentiment that most central banks have reached the peak in their current rate hiking cycles, with rate cuts expected to commence in mid-to-late 2024, if not earlier. We continue to be selective within curves and securities depending on prevailing valuations and market events.

#### Relative value

The strategy remains tactical in terms of curve and country positioning based on relative value and roll-down opportunities. We seek to exploit attractive security mispricings and market dislocations.

#### Reflation

We remain overweight to U.S. breakevens as long-term inflation expectations are still well anchored despite inflation continuing to run above the Fed's target and core CPI remaining stubbornly high. We maintain an underweight/short position in Eurozone breakevens given EUR HICP is still rich and less attractive than U.S. breakevens (relative value view). We still prefer to have a positive percentage market value exposure. We maintain a modest overweight position in Japanese linkers given they lagged global recovery initially and provide asymmetric payoff opportunities.

#### Spread sectors

We remain cautious overall within generic corporate credit. We prefer U.S. agency and non-agency MBS given attractive valuations and yield pickup. Within currencies, we seek alpha opportunities via an FX relative value carry strategy in DM and liquid EM FX.

# Sector exposure

	% of Market value		Duration in years	
	30 Sep '23	31 Dec '23	30 Sep '23	31 Dec '23
<b>Inflation Linked Bonds</b>	<b>116.35</b>	<b>118.01</b>	<b>7.20</b>	<b>7.39</b>
United States	103.97	105.53	6.90	7.05
United Kingdom	0.00	0.00	0.00	0.00
Europe	5.06	5.57	0.15	0.18
Canada	0.35	0.37	0.01	0.01
Other***	2.06	2.25	0.10	0.11
Other Short Duration Instruments	4.91	4.29	0.04	0.04
<b>Non Inflation Linked Bonds</b>	<b>-16.35</b>	<b>-18.01</b>	<b>-0.63</b>	<b>-0.75</b>
US Government Related	-21.60	-10.47	-0.76	-0.76
Mortgage	9.94	12.74	0.51	0.54
Invest. Grade Credit	0.47	0.03	0.00	0.00
High Yield Credit	0.00	0.00	0.00	0.00
Non-U.S. Developed	-14.55	-11.55	-0.48	-0.24
Emerging Markets**	0.00	0.11	0.00	0.00
EM Short Duration Instruments	0.00	0.01	-0.00	0.00
Other***	0.07	0.08	0.00	0.00
Net Other Short Duration Instruments****	9.31	-8.95	0.10	-0.28
<b>Total</b>	<b>100</b>	<b>100</b>	<b>6.57</b>	<b>6.65</b>

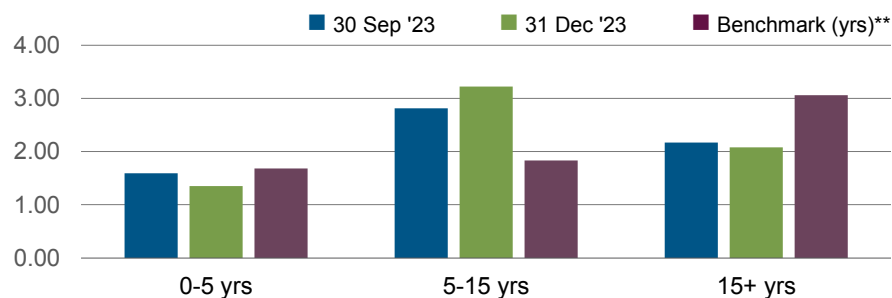
\*\*Emerging markets instruments includes an emerging market security or other instrument economically tied to an emerging market country by country of risk with an effective duration less than one year and rated investment grade or higher or if unrated, determined to be similar quality by PIMCO. Emerging Markets includes the value of short duration emerging markets instruments previously reported in another category.

\*\*\*Investment vehicles not listed, allowed by prospectus.

\*\*\*\*Net Other Short Duration Instruments includes securities and other instruments (except instruments tied to emerging markets by country of risk) with an effective duration less than one year and rated investment grade or higher or, if unrated, determined by PIMCO to be of comparable quality, commingled liquidity funds, uninvested cash, interest receivables, net unsettled trades, broker money and derivatives offset. With respect to certain categories of short duration securities, the Adviser reserves the discretion to require a minimum credit rating higher than investment grade for inclusion in this category.

# Portfolio characteristics

## Key rate duration exposure



	Portfolio (yrs)		Benchmark (yrs)**
	30 Sep '23	31 Dec '23	31 Dec '23
0-5 yrs	1.59	1.35	1.68
5-15 yrs	2.81	3.22	1.83
15+ yrs	2.17	2.08	3.06
<b>Total</b>	<b>6.57</b>	<b>6.65</b>	<b>6.57</b>

## Interest rate exposure

	Portfolio (yrs)		Benchmark (yrs)**
	30 Sep '23	31 Dec '23	31 Dec '23
Effective duration	6.57	6.64	6.58
Bull market duration	6.49	6.51	6.62
Bear market duration	6.48	6.80	6.54
<b>Spread duration</b>			
Mortgage spread duration	0.73	0.79	0.00
Corporate spread duration	0.01	0.01	0.00
Emerging markets spread duration	0.00	0.00	0.00
Swap spread duration	0.06	-0.20	0.00
Covered bond spread duration	0.22	0.15	0.00
Sovereign related spread duration	0.00	0.00	0.00

## Derivative exposure (% of duration)

	30 Sep '23	31 Dec '23
<b>Government futures</b>	-22.39	-18.78
<b>Interest rate swaps</b>	-2.06	1.15
<b>Credit default swaps*</b>	0.19	0.15
Purchased swaps	0.00	0.00
Written swaps	0.19	0.15
<b>Options</b>	2.80	-3.38
Purchased Options	-2.28	0.00
Written Options	5.08	-3.38
<b>Mortgage Derivatives</b>	0.00	0.00
<b>Money Market Derivatives</b>	0.11	-0.85
Futures	0.00	-0.94
Interest rate swaps	0.11	0.09
<b>Other Derivatives</b>	17.68	17.45

\* Shown as a percentage of market value

\*\*Benchmark duration is calculated by PIMCO  
Benchmark: Bloomberg U.S. TIPS Index



# Country and currency exposure

## Country exposure by currency of settlement

	30 Sep '23		31 Dec '23	
	Duration (yrs)	FX (%)	Duration (yrs)	FX (%)
<b>United States</b>	<b>6.79</b>	<b>99.94</b>	<b>6.69</b>	<b>100.89</b>
<b>Japan</b>	<b>-0.10</b>	<b>0.05</b>	<b>-0.00</b>	<b>0.22</b>
<b>Eurozone</b>	<b>-0.35</b>	<b>-0.01</b>	<b>-0.19</b>	<b>-0.03</b>
Euro Currency	0.00	-0.01	0.00	-0.03
European Union	0.26	0.00	0.13	0.00
France	0.01	0.00	0.01	0.00
Germany	-0.72	0.00	-0.43	0.00
Italy	0.10	0.00	0.10	0.00
<b>United Kingdom</b>	<b>-0.00</b>	<b>0.00</b>	<b>0.00</b>	<b>0.01</b>
<b>Europe non-EMU</b>	<b>0.23</b>	<b>-0.01</b>	<b>0.14</b>	<b>0.04</b>
Denmark	0.23	-0.01	0.14	0.04
Sweden	-0.00	-0.01	-0.00	-0.01
Switzerland	0.00	0.01	0.00	0.01
<b>Dollar Block</b>	<b>0.01</b>	<b>0.04</b>	<b>0.01</b>	<b>-0.96</b>
Australia	-0.00	0.01	-0.00	0.01
Canada	0.01	0.01	0.01	-0.99
New Zealand	0.00	0.02	0.00	0.02
<b>Other Industrialized Countries</b>	<b>-0.00</b>	<b>-0.01</b>	<b>-0.00</b>	<b>-1.04</b>
South Korea	-0.00	-0.00	-0.00	-0.42
Taiwan	0.00	0.00	-0.00	-0.61
<b>EM - Asia</b>	<b>0.00</b>	<b>0.00</b>	<b>-0.00</b>	<b>-0.15</b>
China	0.00	0.00	-0.00	-0.80
India	0.00	0.00	0.00	0.39
Indonesia	0.00	0.00	0.00	0.26
<b>EM - Latin America</b>	<b>-0.00</b>	<b>0.00</b>	<b>0.00</b>	<b>0.66</b>
Argentina	0.00	0.01	0.00	0.01
Brazil	0.00	0.00	0.00	0.31
Mexico	-0.00	0.03	0.00	0.39
Peru	-0.00	-0.04	-0.00	-0.04
<b>EM - CEEMEA</b>	<b>0.00</b>	<b>0.00</b>	<b>0.00</b>	<b>0.36</b>
South Africa	0.00	0.00	0.00	0.36
<b>Total</b>	<b>6.57</b>	<b>100</b>	<b>6.64</b>	<b>100</b>

## Emerging markets exposure by country of risk

	30 Sep '23			31 Dec '23		
	% of MV short duration Instruments	% of MV bonds	Duration (yrs)	% of MV short duration Instruments	% of MV bonds	Duration (yrs)
China	0.00	0.00	0.00	-0.01	0.00	0.00
Hungary	0.00	0.00	0.00	0.00	0.11	0.00
Mexico	0.00	0.00	0.00	0.01	0.00	0.00
<b>Total</b>	<b>0.00</b>	<b>0.00</b>	<b>0.00</b>	<b>0.01</b>	<b>0.11</b>	<b>0.00</b>

# Additional share class performance

PIMCO Real Return Fund (net of fees performance)

Performance periods ended: 31 Dec '23	Gross expense ratio	Net expense ratio	Adjusted expense ratio	NAV currency	Class Inception date	3 mos.	6 mos.	1 yr.	3 yrs.	5 yrs.	10 yrs.	SI
Class A (at NAV)	1.07	-	0.85	USD	29 Jan '97	4.46	1.94	3.33	-1.53	2.87	1.97	4.67
Class A (at MOP)	1.07	-	0.85	USD	29 Jan '97	0.54	-1.89	-0.55	-2.78	2.09	1.58	4.55
Class ADMIN	0.92	-	0.70	USD	28 Apr '00	4.50	2.01	3.48	-1.39	3.02	2.12	4.85
Class C (at NAV)	1.57	-	1.35	USD	29 Jan '97	4.33	1.68	2.81	-2.04	2.36	1.46	4.15
Class C (at MOP)	1.57	-	1.35	USD	29 Jan '97	3.33	0.68	1.81	-2.04	2.36	1.46	4.15
Class I-2	0.77	-	0.55	USD	30 Apr '08	4.54	2.09	3.64	-1.24	3.18	2.27	5.02
Class I-3	0.87	0.82	0.60	USD	27 Apr '18	4.52	2.06	3.58	-1.29	3.13	2.22	4.96
Class INST	0.67	-	0.45	USD	29 Jan '97	4.56	2.14	3.74	-1.14	3.28	2.38	5.11
Class R	1.32	-	1.10	USD	31 Dec '02	4.39	1.81	3.07	-1.78	2.61	1.71	4.40
Bloomberg U.S. TIPS Index						4.71	1.99	3.90	-1.00	3.15	2.42	4.69

The Net Expense Ratio for the I-3 Class reflects a contractual supervisory and administrative fee waiver and/or expense reduction in place through 31 July 2024 and renews automatically for a full year unless terminated by PIMCO in accordance with the terms of the agreement. See the Fund's prospectus for more information.

The Adjusted Expense Ratio excludes certain investment expenses, such as interest expense from borrowings and repurchase agreements and dividend expense from investments on short sales, incurred directly by the Fund or indirectly through the Fund's investments in underlying PIMCO Funds (if applicable), none of which are paid to PIMCO.

*Performance quoted represents past performance. Past performance is not a guarantee or a reliable indicator of future results. Investment return and the principal value of an investment will fluctuate. Shares may be worth more or less than original cost when redeemed. Current performance may be lower or higher than performance shown. For performance current to the most recent month end, visit [pimco.com](http://pimco.com) or call 888.87.PIMCO. The maximum offering price (MOP) returns take into account the Class A maximum initial sales charge of 3.75%. The maximum offering price (MOP) returns take into account the contingent deferred sales charge (CDSC) for Class C shares, which for this fund is 1.00%.*

For the periods prior to the inception date of a share class, performance information is based on the performance of the Fund's oldest class shares, adjusted to reflect the fees and expenses paid by that class of shares.

# Important Disclosures

---

*This material is authorized for use only when preceded or accompanied by the current PIMCO funds prospectus or summary prospectus, if available.*

**Past performance is not a guarantee or a reliable indicator of future results.** The performance figures presented reflect the total return performance, unless otherwise noted, after fees and reflect changes in share price and reinvestment of dividend and capital gain distributions. All periods longer than one year are annualized. Periods less than one year are cumulative. The minimum initial investment for Institutional, I-2, I-3 and Administrative class shares is \$1 million; however, it may be modified for certain financial intermediaries who submit trades on behalf of eligible investors.

There is no assurance that any fund, including any fund that has experienced **high or unusual performance** for one or more periods, will experience similar levels of performance in the future. High performance is defined as a significant increase in either 1) a fund's total return in excess of that of the fund's benchmark between reporting periods or 2) a fund's total return in excess of the fund's historical returns between reporting periods. Unusual performance is defined as a significant change in a fund's performance as compared to one or more previous reporting periods.

Differences in the Fund's performance versus the index and related attribution information with respect to particular categories of securities or individual positions may be attributable, in part, to differences in the pricing methodologies used by the Fund and the index.

Investments made by a Fund and the results achieved by a Fund are not expected to be the same as those made by any other PIMCO-advised Fund, including those with a similar name, investment objective or policies. A new or smaller Fund's performance may not represent how the Fund is expected to or may perform in the long-term. New Funds have limited operating histories for investors to evaluate and new and smaller Funds may not attract sufficient assets to achieve investment and trading efficiencies. A Fund may be forced to sell a comparatively large portion of its portfolio to meet significant shareholder redemptions for cash, or hold a comparatively large portion of its portfolio in cash due to significant share purchases for cash, in each case when the Fund otherwise would not seek to do so, which may adversely affect performance.

**A word about risk:** Investing in the **bond market** is subject to risks, including market, interest rate, issuer, credit, inflation risk, and liquidity risk. The value of most bonds and bond strategies are impacted by changes in interest rates. Bonds and bond strategies with longer durations tend to be more sensitive and volatile than those with shorter durations; bond prices generally fall as interest rates rise, and low interest rate environments increase this risk. Reductions in bond counterparty capacity may contribute to decreased market liquidity and increased price volatility. Bond investments may be worth more or less than the original cost when redeemed. **Inflation-linked bonds (ILBs)** issued by a government are fixed-income securities whose principal value is periodically adjusted according to the rate of inflation; ILBs decline in value when real interest rates rise. **Sovereign securities** are generally backed by the issuing government, obligations of U.S. Government agencies and authorities are supported by varying degrees but are generally not backed by the full faith of the U.S. Government; portfolios that invest in such securities are not guaranteed and will fluctuate in value. Investing in **foreign denominated and/or domiciled securities** may involve heightened risk due to currency fluctuations, and economic and political risks, which may be enhanced in emerging markets. **Mortgage and asset-backed securities** may be sensitive to changes in interest rates, subject to early repayment risk, and their value may fluctuate in response to the market's perception of issuer creditworthiness; while generally supported by some form of government or private guarantee there is no assurance that private guarantors will meet their obligations. **High-yield, lower-rated, securities** involve greater risk than higher-rated securities; portfolios that invest in them may be subject to greater levels of credit and liquidity risk than portfolios that do not. **Equities** may decline in value due to both real and perceived general market, economic, and industry conditions. **Derivatives** may involve certain costs and risks such as liquidity, interest rate, market, credit, management and the risk that a position could not be closed when most advantageous. Investing in derivatives could lose more than the amount invested. **Diversification** does not ensure against loss.

Portfolio allocations and other information in the charts in this Quarterly Investment Report are based on the fund's net assets. These percentages may differ from those used for the fund's compliance calculations, including the fund's prospectus, regulatory, and other investment limitations and policies, which may be based on total assets of the fund or other measurements, may include or exclude various categories of investments from those covered in the portfolio allocation categories shown in this report, and may be based on different classifications and measurements of the fund's investments and other criteria. All funds are separately monitored for compliance with prospectus and regulatory requirements.

Statements concerning financial market trends or portfolio strategies are based on current market conditions, which will fluctuate. There is no guarantee that these investment strategies will work under all market conditions or are appropriate for all investors and each investor should evaluate their ability to invest for the long term, especially during periods of downturn in the market. Outlook and strategies are subject to change without notice.

# Important Disclosures

---

Forecasts, estimates and certain information contained herein are based upon proprietary research and should not be interpreted as investment advice, as an offer or solicitation, nor as the purchase or sale of any financial instrument. Forecasts and estimates have certain inherent limitations, and unlike an actual performance record, do not reflect actual trading, liquidity constraints, fees, and/or other costs. In addition, references to future results should not be construed as an estimate or promise of results that a client portfolio may achieve.

Bloomberg U.S. TIPS Index is an unmanaged market index comprised of all U.S. Treasury Inflation-Protected Securities rated investment grade (Baa3 or better), have at least one year to final maturity, and at least \$500 million par amount outstanding. It is not possible to invest directly in an unmanaged index.

The following defined terms are used throughout the report. Emerging market short duration instruments includes an emerging market security or other instrument economically tied to an emerging market country by country of risk with an effective duration less than one year and rated investment grade or higher or if unrated, determined to be similar quality by PIMCO. Net other short duration instruments includes securities and other instruments (except instruments tied to emerging markets by country of risk) with an effective duration less than one year and rated investment grade or higher or, if unrated, determined by PIMCO to be of comparable quality, commingled liquidity funds, uninvested cash, interest receivables, net unsettled trades, broker money and derivatives offset. With respect to certain categories of short duration securities, the Adviser reserves the discretion to require a minimum credit rating higher than investment grade for inclusion in this category. Short duration derivatives and derivatives offsets include: 1) derivatives with an effective duration less than one year and where the country of risk is not an emerging market country (for example, Eurodollar futures) and 2) offsets associated with investments in futures, swaps and other derivatives. Such offsets may be taken at the notional value of the derivative position which in certain instances may exceed the actual amount owed on such positions. Municipals/Other may include convertibles, preferred and yankee bonds.

**The performance figures presented reflect the performance for the institutional class unless otherwise noted.**

**A note about Sector exposure:** Other indicates swaps and securities issued in euros.

**A note about Emerging markets exposure by country of risk:** country of risk reflects the country of incorporation of the ultimate parent company.

PIMCO uses an internal model for calculating effective duration, which may result in a different value for the duration of an index compared to the duration calculated by the index provider or another third party.

PIMCO as a general matter provides services to qualified institutions, financial intermediaries and institutional investors. Individual investors should contact their own financial professional to determine the most appropriate investment options for their financial situation. This material contains the current opinions of the manager and such opinions are subject to change without notice. This material has been distributed for informational purposes only and should not be considered as investment advice or a recommendation of any particular security, strategy or investment product. Information contained herein has been obtained from sources believed to be reliable, but not guaranteed. No part of this material may be reproduced in any form, or referred to in any other publication, without express written permission. PIMCO is a trademark of Allianz Asset Management of America LLC in the United States and throughout the world. **PIMCO Investments LLC, distributor**, 1633 Broadway, New York, NY, 10019 is a company of PIMCO ©2024 PIMCO.

# Important Disclosures

Acronyms and definitions of investment terms used throughout the report:

**Alpha** is a measure of performance on a risk-adjusted basis calculated by comparing the volatility (price risk) of a portfolio vs. its risk-adjusted performance to a benchmark index; the excess return relative to the benchmark is alpha.

**Average coupon** is the average of the coupon payments of the underlying bonds within the portfolio.

**Average effective maturity** is a weighted average of all the maturities of the bonds in a portfolio, computed by weighting each bond's effective maturity by the market value of the security.

**"Bend-but-not-break"** refers to credits that PIMCO would not expect to default in a credit-stressed environment.

**Beta** is a measure of price sensitivity to market movements. Market beta is 1.

**Breakeven inflation rate** (or expectation) is a market-based measure of expected inflation or the difference between the yield of a nominal and an inflation-linked bond of the same maturity.

**Carry** is the rate of interest earned by holding the respective securities.

The terms **"cheap" and "rich"** as used herein generally refer to a security or asset class that is deemed to be substantially under- or overpriced compared to both its historical average as well as to the investment manager's future expectations. There is no guarantee of future results or that a security's valuation will ensure a profit or protect against a loss.

**CPI** is the Consumer Price Index.

The **credit quality** of a particular security or group of securities does not ensure the stability or safety of an overall portfolio. The quality ratings of individual issues/issuers are provided to indicate the credit-worthiness of such issues/issuer and generally range from AAA, Aaa, or AAA (highest) to D, C, or D (lowest) for S&P, Moody's, and Fitch respectively.

**Dividend yield** is represented by the weighted average coupon divided by the weighted average price.

**Duration** is the measure of a bond's price sensitivity to interest rates and is expressed in years.

**Effective duration** is the duration for a bond with an embedded option when the value is calculated to include the expected change in cash flow caused by the option as interest rates change.

**Forward curve** is a function graph that defines the prices at which a contract for future delivery or payment can be concluded today.

**Fallen angel** is a bond that was initially given an investment grade rating but has since been reduced to below investment grade status.

**GFC** is the Global Financial Crisis.

**Information ratio** is a ratio of portfolio returns above the returns of a benchmark to the volatility of those returns.

**Like-duration Securities** are calculated by the index provider by comparing the index return to a hypothetical matched position in the security.

**LNG** is Liquefied Natural Gas.

The **Option Adjusted Spread (OAS)** measures the spread over a variety of possible interest rate paths. A security's OAS is the average return an investor will earn over Treasury returns, taking all possible future interest rate scenarios into account. The OAS is the net spread over the swap curve that will on average be earned if the security is held to maturity.

**Rising star** is the term given to a bond that was rated high yield but has since been upgraded to investment grade.

**"Risk assets"** are any financial security or instrument that are likely to fluctuate in price.

**Risk premia** is the return in excess of the risk-free rate of return an investment is expected to yield.

**Roll yield** is the yield that a futures investor captures as their long position in a futures contract converges to the spot price.

**"Safe haven"** is an investment that is expected to retain or increase in value during times of market turbulence.

The **SEC yield** is an annualized yield based on the most recent 30 day period. The subsidized yield includes contractual expense reimbursements and it would be lower without those reimbursements. The **Unsubsidized 30 day SEC Yield** excludes contractual expense reimbursements.

**Tracking error** measures the dispersion or volatility of excess returns relative to a benchmark.

To relate the price sensitivity of ILBs to changes in nominal yields, yield beta is applied to nominal changes to arrive at a price sensitivity of ILBs to changes in nominal rates. A **yield beta** of 0.90 implies that if nominal yields move 100 basis points, real yields will move 90 basis points. ILBs with long maturity may respond differently to changes in nominal rates than shorter maturity ILBs.

The distribution yield for monthly paying Funds is calculated by annualizing actual dividends distributed for the monthly period ended on the date shown and dividing by the net asset value on the last business day for the same period. The distribution yield for quarterly paying Funds is calculated by taking the average of the prior four quarterly distribution yields. The quarterly distribution yields are calculated by annualizing actual dividends distributed for the quarterly period ended on the most recent quarterly distribution date and dividing by the net asset value for the same date. The yield does not include long- or short-term capital gains distributions.

Asset-Backed Security (ABS); Bank of England (BOE); Bank of Japan (BOJ); Breakeven Inflation (BEI); Collateralized Debt Obligation (CDO); Collateralized Loan Obligation (CLO); Commercial Mortgage-Backed Security (CMBS); Developed Markets (DM); Emerging Markets (EM); Federal Reserve Board (The Fed); Europe Central Bank (ECB); Federal Open Market Committee (FOMC); Foreign Exchange (FX); Gross Domestic Product (GDP); Gulf Cooperation Council (GCC); High Yield (HY); Inflation-Linked Bond (ILS); Investment Grade (IG); Leveraged-buyout (LBO); Loan-to-Value (LTV); Master Limited Partnership (MLP); Mortgage-Backed Security (MBS); Market Weighted Spread (MWS); Real Estate Investment Trust (REIT); Residential Mortgage-Backed Security (RMBS); Treasury Inflation-Protected Security (TIPS); Year-over-Year (YoY)